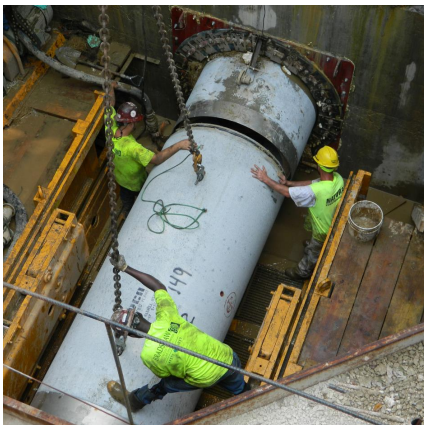


Castleton Relief Sewer Project - Phase 1 Indianapolis, IN



PROJECT OVERVIEW AND CHALLENGES

Bradshaw Construction installed 2,740' of 42" reinforced concrete pipe for a relief sanitary sewer by microtunneling through sand with cobbles and boulders below the groundwater table at an average depth of 20'. The microtunneling was accomplished in four drives, the longest of which was 810'. Six access shafts were constructed using steel ribs and liner plates (16' and 20' in diameter) and steel sheet piling (16' and 20' square). Six precast concrete manholes were installed up to 96" in diameter.



PROJECT INFORMATION - 504

OWNER:

Citizens Energy Group (formerly Consolidated City of Indianapolis, DPW)
Sandra Shafer, Project Manager
317.327.4546
sshaffer@citizensenergygroup.com

ENGINEER:

Black and Veatch Inc.
5750 Castle Creek Parkway
Indianapolis, IN 46250
James McKelvey, 317.570.8331

CONTRACTOR:

Bradshaw Construction Corporation

CONTRACT VALUE:

\$5,988,200

COMPLETION DATE:

6/30/2012

GEOLOGY:

Sand, Gravel, Boulders, Glacial Till

EXCAVATION METHOD:

Herrenknecht MTBM 53" Ø

MINING DIMENSIONS:

2,740' x 53" Ø

FINAL LINING:

One Pass Pipe Jacked
RCP 42" Ø

FOR MORE INFORMATION:

Todd Brown, Project Manager
410.970.8300
tbrown@bradshawcc.com
Refer to Project 504