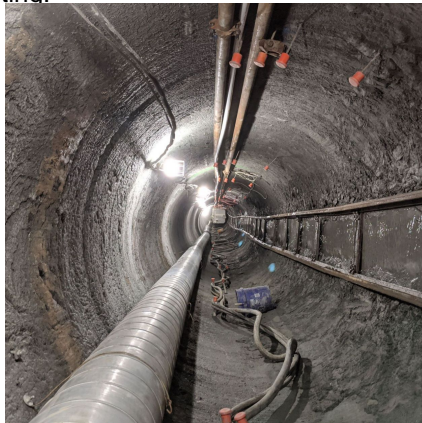
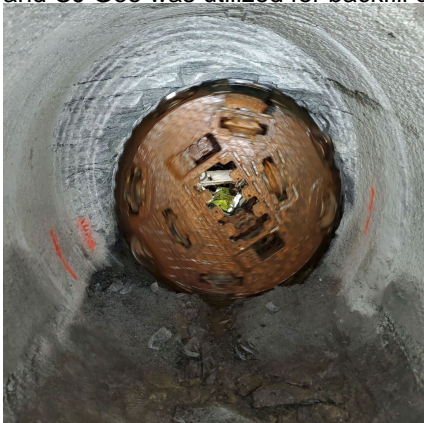


Niles Avenue Sewer Improvements Atlanta, GA



PROJECT OVERVIEW AND CHALLENGES

Bradshaw Construction Corporation has completed work on a project NW of Atlanta for the Department of Watershed Management to realign an existing 15" sewer line. BCC installed four liner plate shafts ranging in size and geology, and 1,857' of 18" DIP by trenchless means in difficult geotechnical conditions requiring the use of a Robbins Rockhead Double Shielded TBM and a Herrenknecht MTBM. The Robbins TBM mined through hard rock spanning a total 713' on a 1000' radius curve. The first MTBM tunnel was completed simultaneously, totaling 346' in mixed ground conditions. The last 701', combined the use of both machines. The MTBM was launched 415' one direction into wet silty clay, while the Robbins TBM launched in the opposite direction to meet the MTBM within the rock portion of the drive. The Robbins machine reached the MTBM and was backed up into the shaft, for the MTBM to be jacked the remainder of the way. The 18" DIP was installed, and CJ Geo was utilized for backfill grouting.



PROJECT INFORMATION - 601

OWNER:

City of Atlanta
Dept. of Watershed Management
Rodney Blount
(404) 867-5319

ENGINEER:

COA Department of Watershed
Management Engineering Services
Reginald Crayton
rcrayton@AtlantaGov.com

CONTRACTOR:

Garney Construction

COMPLETION DATE:

12/22/2020

GEOLOGY:

Silty Sand & Granitic Gneiss

EXCAVATION METHOD:

Herrenknecht AVN 1200 MTBM

MINING DIMENSIONS:

1761' x 60" Ø

FINAL LINING:

18" Ductile Iron Pipe

FOR MORE INFORMATION:

Chris Flanagan, Project Manager
410-970-8300
cflanagan@bradshawcc.com
Refer to Project 601