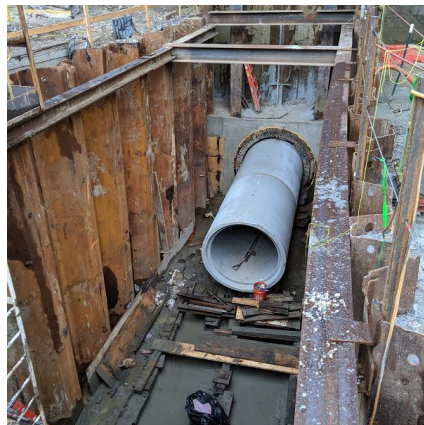
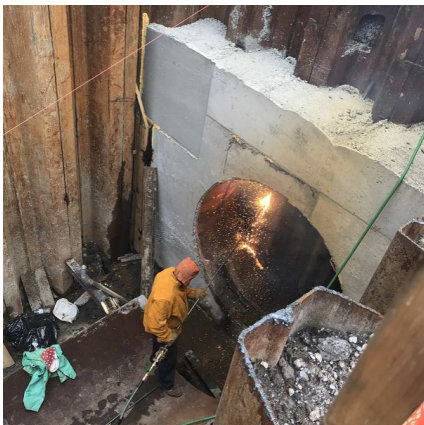


Rte 264 - Interchange Improvements 64 WB Ramp to 264 EB Norfolk, VA



PROJECT OVERVIEW AND CHALLENGES

Bradshaw Construction installed two 60" RCP crossings underneath I-264 and the LRT tracks for VDOT in Norfolk, VA. The tunnel crossings (107' & 274') were required for tidal flow management of the Nosehs Creek underneath the newly constructed highway overpass. The tunnels were excavated through sand and clay below the water table, with extensive obstructions encountered on the first crossing underneath the LRT tracks and Curlew Drive. Challenges included tunneling with shallow cover through the obstructions, requiring extensive surface monitoring and obstruction removal to allow passage of the MTBM. Coordination with the LRT track officials and completing the crossing within a short closure window, despite the unanticipated obstructions, was achieved through the emergency mobilization of a second crew.



PROJECT INFORMATION - 596

OWNER:

VDOT
James Klotz
757-274-2552

ENGINEER:

AECOM
757-499-4224

CONTRACTOR:

Tutor Perini Corporation

COMPLETION DATE:

8/2/2019

GEOLOGY:

Sand, Clay, Obstructions

EXCAVATION METHOD:

Herrenknecht AVN-1500 MTBM

MINING DIMENSIONS:

381' x 73.5" Ø

FINAL LINING:

60" RCP

FOR MORE INFORMATION:

Jordan Bradshaw
410-970-8300
jordan.bradshaw@bradshawcc.com
Refer to Project 596