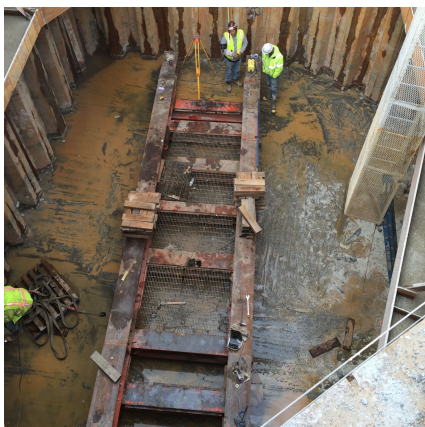


South Platte Interceptor Brighton, CO



PROJECT OVERVIEW AND CHALLENGES

Bradshaw Construction was contracted to mine five microtunnel crossings on Metro PAR 1088. Crossings at 168th & 160th Avenues were jacked with 96 inch steel casing. Crossings for the South Platte River & E-470 are completed and utilized 78 inch steel casing. The ground conditions consist of sand, gravel, coarse alluvium, and cobbles below the groundwater table. The scope also includes several shafts and installation of fiberglass reinforced pipe within the tunnels. Shafts were the following dimensions, (2) steel 16' x 32' x 25.5' deep, (1) steel 16' x 32' x 15' deep, (2) liner plate 18'OD x 24.5' deep, (1) liner plate 20'OD x 24.5' deep, (1) steel 20' x 24' x 28.8' deep, (1) steel 36' x 21' x 32' deep, & (1) 21' x 18' x 40.5' deep. Construction was completed June 5, 2015.



PROJECT INFORMATION - 532

OWNER:

Metro Wastewater Reclamation
District
Engineering
John Kuosman
303-286-3216
jkuosman@mwrd.dot.co.us

ENGINEER:

HDR Engineering, Inc.
Jeff Hemmerle
303-764-1520
jeffrey.hemmerle@hdrinc.com

CONTRACTOR:

Western Summit Constructors, Inc.

COMPLETION DATE:

6/5/2015

GEOLOGY:

Sand, Gravel, Cobbles, Coarse
Alluvium

EXCAVATION METHOD:

Hydraulic Excavator
Mini Excavator

MINING DIMENSIONS:

(4) 32'x16'x25.5VF, (2) 18'x24.5VF,
& (2) 20'x24.5VF

FINAL LINING:

(4) Steel Sheeting
(4) Liner Plate, Rib & Board

FOR MORE INFORMATION:

Todd Brown, Project Manager
410-970-8300
tbrown@bradshawcc.com
Refer to Project 532