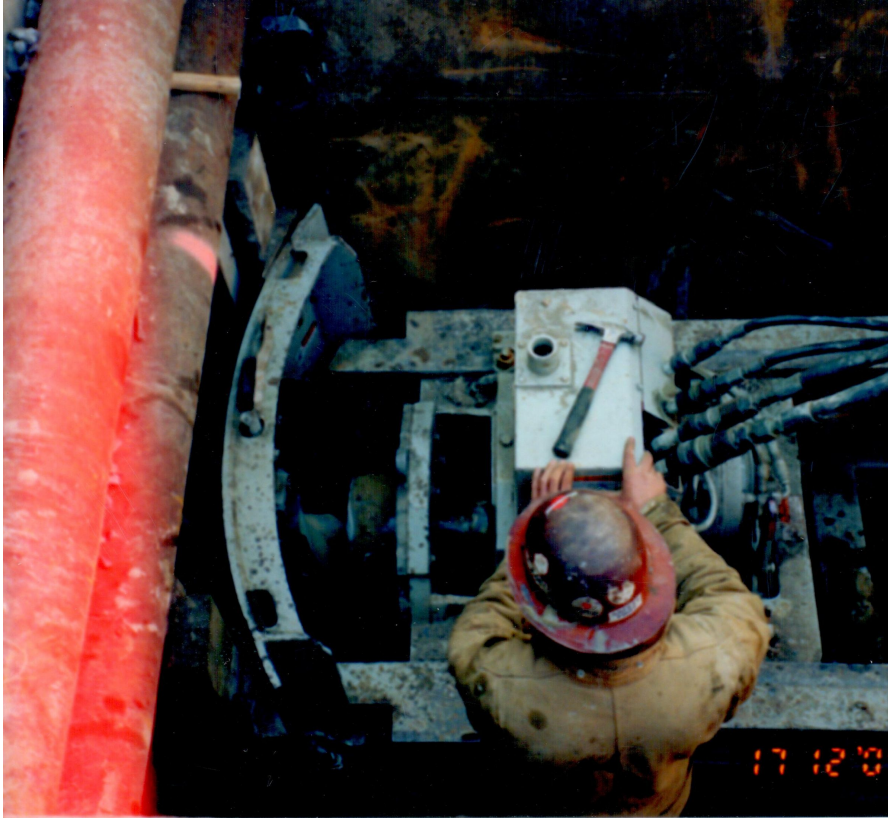


## Locust Point Interceptor Baltimore, MD



### PROJECT OVERVIEW AND CHALLENGES

Bradshaw Construction installed 240 linear feet of 6" vitrified clay pipe sewer using an Akkerman GBM-240 "pilot tube" guided boring system. The ground conditions were silt, sand, gravel and rubble fill. The Akkerman GBM system pipe jacks in three passes (pilot tube, cased augers, and product pipe) for installation typically to +/-1 inch of design alignment and elevation. The pilot tube was launched from a trench box shaft and received in a liner plate and steel rib shaft. It went under existing park land and its stadium style seating and was completed within Key Highway, a major city street. The primary challenge was the soil condition. The rubble fill required an emergency pit to remove the obstructions before the pilot tube and augers could complete the drive.



### PROJECT INFORMATION - 424

#### OWNER:

City of Baltimore  
Department of Public Works  
Joe Paplauskas  
(410) 355-2084

#### ENGINEER:

Rummel, Klepper, & Kahl  
James Kaladis  
(410) 728-2900

#### CONTRACTOR:

Bradshaw Construction Corporation

#### CONTRACT VALUE:

\$2,330,000

#### COMPLETION DATE:

4/1/2005

#### GEOLOGY:

Silt, Sand, Gravel and Rubble Fill

#### EXCAVATION METHOD:

Akkerman GBM-240

#### MINING DIMENSIONS:

240' x 10" Ø

#### FINAL LINING:

6" Vitrified Clay Pipe

#### FOR MORE INFORMATION:

Lester M. Bradshaw, Jr., President  
(410) 970-8300  
Lester.Bradshaw@bradshawcc.com  
Refer to Project 424