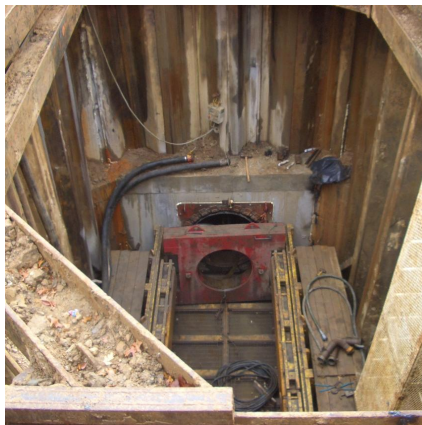


Potomac Interceptor Sewer System Improvements Arlington , VA



PROJECT OVERVIEW AND CHALLENGES

Bradshaw Construction has completed three tunnels by microtunneling, totaling 1,183 linear feet, below highways and the Arlington National Cemetery for Arlington County's Potomac Interceptor. 60-inches of steel casing was installed by microtunnel through soft ground to place 42-inch FRP carrier pipe for a gravity sewer on one tunnel. 48-inch RCP was direct jacked through rock and mixed face conditions to complete the other two tunnels. The rock was stronger than anticipated, but the tunnels were installed while maintaining respect for the visitors of the National Cemetery and the US Marine Corps Memorial.



PROJECT INFORMATION - 485

OWNER:

Dept. of Environmental Services
Arlington County, VA
Jerry Kuo
703.228.3664

ENGINEER:

CDM
Daniel Gilroy
703.247.8730

CONTRACTOR:

Flippo Construction

COMPLETION DATE:

5/31/2012

GEOLOGY:

Rock, Sand, Clay

EXCAVATION METHOD:

Herrenknecht AVN-1200 MTBM

MINING DIMENSIONS:

238' x 59", 417' x 59", 538' x 59" Ø

FINAL LINING:

48" Reinforced Concrete Pipe
48" Fiber Reinforced Pipe

FOR MORE INFORMATION:

Michael Wanhatalo, Project Manager
410.970.8300
mwanhatalo@bradshawcc.com
Refer to Project 485