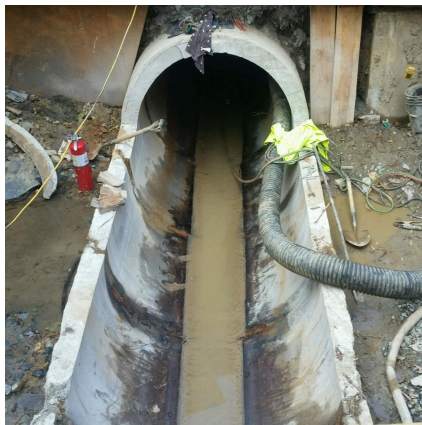


## Arkendale-Powell's Creek Third Track Project Quantico, VA



### PROJECT OVERVIEW AND CHALLENGES

Bradshaw completed an emergency slipline repair project for KC Constructors (Kiewit-Clark JV). During the construction of a new track for CSX railroad, supportive steel sheeting was driven through an existing 60 inch RCP storm drain, requiring corrective measures. KC Constructors subcontracted Bradshaw to diagnose and repair the damage. After an initial exploration, 50 linear feet of 54 inch FRP was ordered and Bradshaw excavated a trench-box access shaft over the line directly downstream from the damaged joint and saw-cut an opening through the storm drain. The steel sheeting was cut and removed from inside of the storm drain, and the 50 linear feet of FRP was installed and grouted into place. All saw-cut work performed on the RCP for access was repaired, and the storm drain is back in full operation.



### PROJECT INFORMATION - 564

#### OWNER:

CSX Transportation, Inc.  
904-359-3200

#### ENGINEER:

RK&K Engineers  
Michael Hogan  
410-728-2900

#### CONTRACTOR:

KC Constructors Joint Venture

#### COMPLETION DATE:

10/28/2016

#### GEOLOGY:

N/A

#### EXCAVATION METHOD:

Sliplining

#### MINING DIMENSIONS:

50' x 60"Ø

#### FINAL LINING:

54" Fiberglass Reinforced Concrete  
Pipe

#### FOR MORE INFORMATION:

Jordan Bradshaw, Project Manager  
410-970-8300  
jordan.bradshaw@bradshawcc.com  
Refer to Project 564