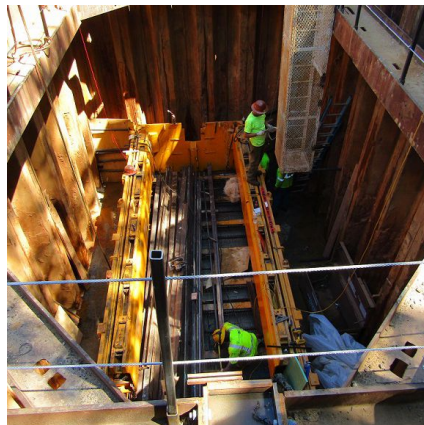


## Coakley Terrace II Transmission Water Main Hyattsville, MD



### PROJECT OVERVIEW AND CHALLENGES

Bradshaw installed 830 ft of 43 inch steel casing in a single drive under the BaltimoreWashington Parkway (I-295) for a 16-inch DIP water transmission main. The Washington Suburban Sanitary Commission (Owner) contracted KCI Technologies (Engineer) and Sagres Construction (General Contractor) to construct the project, with Bradshaw being selected as the microtunnel subcontractor. Tunnel depths ranged from 8 to 35 ft below the surface. The tunnel was under the water table and through loose to dense silty sands and periodic clay. Bradshaw first installed the 30'x16'x16' deep steel sheeted launch shaft. Challenges included passing under existing 48-inch storm drains and an existing 12-inch gas line with minimal clearance (18"), performing the work in close proximity to overhead electrical lines (20'), and completing a long single drive of the 43" diameter casing.



### PROJECT INFORMATION - 563

#### OWNER:

The Washington Suburban Sanitary  
Commission  
April Wilt  
301-206-4307  
april.wilt@wsscwater.com

#### ENGINEER:

KCI Technologies, Inc.  
410-316-7800

#### CONTRACTOR:

Sagres Construction

#### COMPLETION DATE:

8/9/2017

#### GEOLOGY:

Silty Sand, Trace Clay, Trace Gravel

#### EXCAVATION METHOD:

Herrenknecht AVN-800 MTBM

#### MINING DIMENSIONS:

830' x 43"Ø

#### FINAL LINING:

16" Ductile Iron Pipe

#### FOR MORE INFORMATION:

Jordan Bradshaw, Project Manager  
410-970-8300  
jordan.bradshaw@bradshawcc.com  
Refer to Project 563