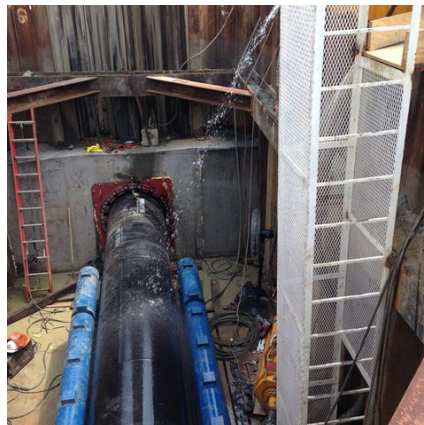


Sewerage System Improvements Division C, Phase 1 & Suction Lines Portsmouth, VA



PROJECT OVERVIEW AND CHALLENGES

Bradshaw Construction microtunnelled 110 linear feet of 43 inch steel casing under a CSX railroad track in Portsmouth, VA. The subsurface conditions consisted of loose, poorly graded & silty sand (SP-SM), below the groundwater table. Settlement points were monitored along the railroad, with all readings measuring less than 1/8 of an inch. Mining was conducted on a 24/7 basis per the requirements of CSX. The HDPE carrier pipe was installed by the General Contractor, Tidewater Utility Construction.



PROJECT INFORMATION - 548

OWNER:

Hampton Roads Sanitation District
Gary Hart
757-460-2261
ghart@hrsd.com

ENGINEER:

URS
Daniel Rickmond
757-321-1231
daniel.rickmond@urs.com

CONTRACTOR:

Tidewater Utility Construction

COMPLETION DATE:

5/28/2015

GEOLOGY:

Sand

EXCAVATION METHOD:

Herrenknecht AVN-800 MTBM

MINING DIMENSIONS:

110' x 43" Ø

FINAL LINING:

30" High Density Polyethylene Pipe

FOR MORE INFORMATION:

Doug Piper, Project Manager
410-970-8300
dpiper@bradshawcc.com
Refer to Project 548