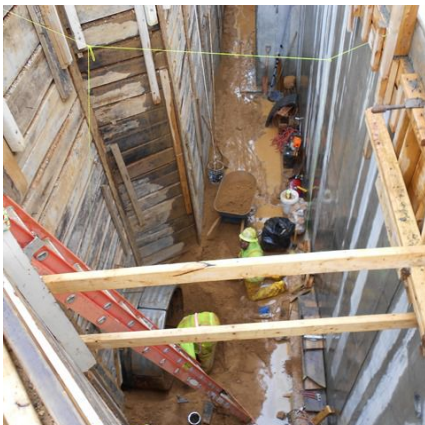


Emergency Generator Replacement John Adams Building Washington D.C.,



PROJECT OVERVIEW AND CHALLENGES

Bradshaw installed 12 linear feet of a 60 inch liner plate tunnel in sandy material under a security wall footing at the John Adams Building in downtown Washington, DC. The tunnel allowed for the connection of a new stormwater management structure to an existing manhole, without disruption to surface features or pedestrian traffic.



PROJECT INFORMATION - 536

OWNER:

The Architect of the Capitol
AOC Procurement
202-226-2557

ENGINEER:

URS
Sarah Napier
202-872-0277

CONTRACTOR:

IMI, Inc.

COMPLETION DATE:

3/21/2014

GEOLOGY:

Sand

EXCAVATION METHOD:

Hand Mine

MINING DIMENSIONS:

12' x 60" Ø

FINAL LINING:

Liner Plate

FOR MORE INFORMATION:

Doug Piper, Project Manager
410-970-8300
dpiper@bradshawcc.com
Refer to Project 536