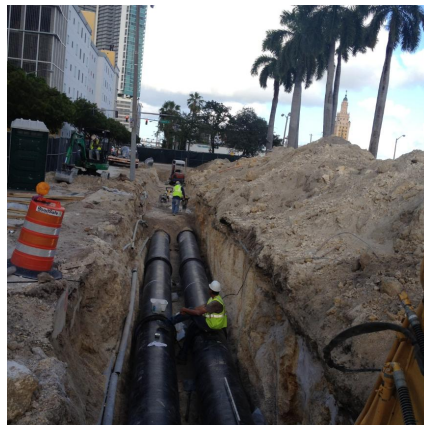
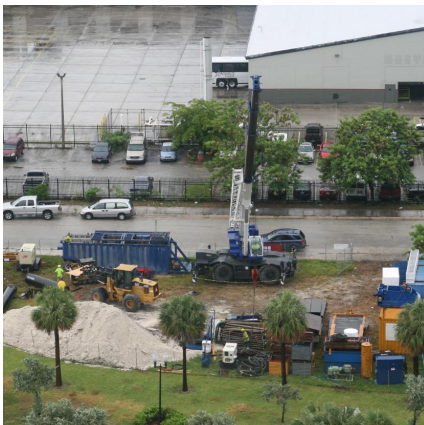


## MDC Thermal Plant Interconnect Project Miami, FL



### PROJECT OVERVIEW AND CHALLENGES

Bradshaw Construction contracted with Consolidated Edison (CES) to install 24" chilled water lines on an accelerated schedule in downtown Miami, Florida. The project consisted of open-cut, shafts, and installing 36" Permalok steel casing by microtunneling through limestone under city streets and the CSX Railroad. Four separate tunnels were launched out of twin launch shafts. The launch shafts were approximately 30 feet x 15 feet, excavated primarily in limestones to depths of 17 to 21 feet. Significant efforts were required to locate and relocate utilities as well as obtain the necessary permits for the project. Work was completed ahead of schedule for CES and MDC to provide chilled water cooling service to their several important city and privately-owned buildings in the area. The project was completed with minimal impact to the traffic, pedestrian, residential, and environment within a very high-profile area.



### PROJECT INFORMATION - 520

#### OWNER:

Miami-Dade County  
Water & Sewer Dept  
Kevin Faris, ConEd Solutions  
813.753.9896 / 305.665.7477  
farisk@conedsolutions.com

#### ENGINEER:

RMF Engineering, Inc.  
Ken Balenske  
410.576.0505

#### CONTRACTOR:

Bradshaw Construction Corporation

#### COMPLETION DATE:

10/31/2012

#### GEOLOGY:

Limestone

#### EXCAVATION METHOD:

Herrenknecht AVN-600 MTBM

#### MINING DIMENSIONS:

940' x 36" Ø

#### FINAL LINING:

24" Ductile Iron Pipe

#### FOR MORE INFORMATION:

Mike Wanhatalo, Project Manager  
410.970.8300  
mwanhatalo@bradshawcc.com  
Refer to Project 520