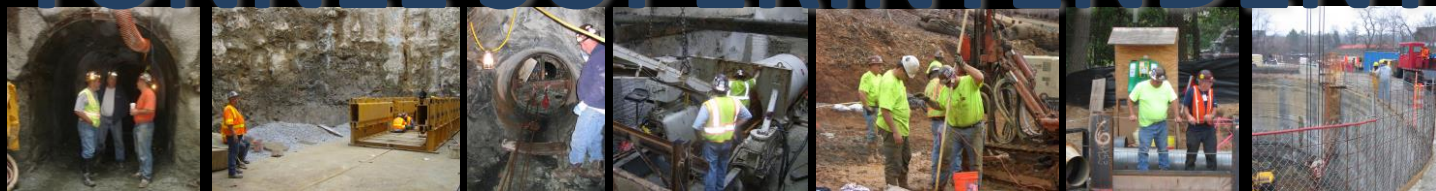


Interested in the tunneling industry?

Unsure of your career path?

You may want to consider becoming a . . .

TUNNEL SUPERINTENDENT



BRADSHAW CONSTRUCTION CORPORATION 175 W. LIBERTY ROAD ELDERSBURG, MD 21784 PHONE 410.970.8300 FAX 410.970.8340 WWW.BRADSHAWCC.COM

A successful Tunnel Superintendent must be physically fit for underground work and be comfortable climbing/crawling within these confined spaces. This position requires knowledge/experience with mechanics, hydraulics and electronics to oversee and address issues during mining. This type of work requires someone who works well under pressure while coordinating numerous activities and provides the leadership skills necessary to oversee field operations, site safety, scheduling, productivity, and work quality.

GENERAL REQUIREMENTS

- *Coordinates daily with General Superintendent on all aspects of work to successfully complete project,*
- *Responsible for providing the necessary equipment, supplies, and labor to ensure production and safety goals are met,*
- *Provides the technical expertise necessary to address and rectify problems arising from equipment failures or unexpected jobsite conditions,*
- *Reviews plans/specs for constructability and scheduling, addressing any issues or deficiencies,*
- *Working knowledge of contracts, budgets, and estimates,*
- *Travel is required – Eastern United States.*

We are an Equal Employment Opportunity Employer and a Drug Free Workplace

Email hr@bradshawcc.com with TUNNEL SUPERINTENDENT in the subject line to find out what training opportunities are available to set you on your new career path!



LIMITATIONS & DISCLAIMER

The above position description is meant to describe the general nature and level of work being performed; it is not intended to be construed as an exhaustive list of all responsibilities, duties and skills required for the position.